

NAFLAME®

NAFLAME® textile was developed for people who work in various environments in which flame retardant equipment is required, and not only does it provide flame retardant performance based on ISO, but it also offers a variety of other benefits such as good mobility due to its ability to stretch, a good design with an assortment of colors to choose from, and economic efficiency due to our small lot production.

Toray protects people using our 3 key points + 1.

- ▶ Flame retardance
- ▶ Melting retardant properties
- ▶ Heat transfer resistance
- + High stretch

From professional to outdoor use

-It protects people from various kinds of heats and fires-

【Characteristics of textile】

1. This is a flame retardant textile that complies with the standards of the international flame retardant “ISO11612” material test, as well as the “ISO11611” and “ISO14116” tests. (See QR code for the test results). Its flame retardant performance is backed by data, and it is adapted to various required performances.

2. It has the ability to stretch due to our own spinning technology and woven design. This has allowed us to achieve both flame retardant performance as well as good functionality and mobility.

3. Regarding the items in our catalog, we maintain a certain amount fabric stock both before and after dyeing it. In addition, because this group of products can be dyed post-production, we were able to solve the problems we had in terms of production lots of flame retardant textiles. We are now able to cope with a variety of production lots to meet the needs of our customers.

【Test for limited flame spread】

【Polyester/Cotton Fabric】



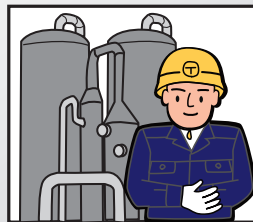
【NAFLAME】



【When should NAFLAME® be worn?】



■ ISO 11611/2015:
Protective clothing for use in welding and allied processes



■ ISO 11612/2015:
Clothing to protect against heat and flame



■ ISO 14116/2015:
Protection against heat and flame
- Limited flame spread materials, material assemblies and clothing

Toray Industries, Inc.
Special Procurement Sect.
Uniform & Advanced Textile Dept

‘TORAY’
Innovation by Chemistry

1-1, Nihonbashi-muromachi 2-chome
Chuo-ku, Tokyo, JAPAN
103-8666

